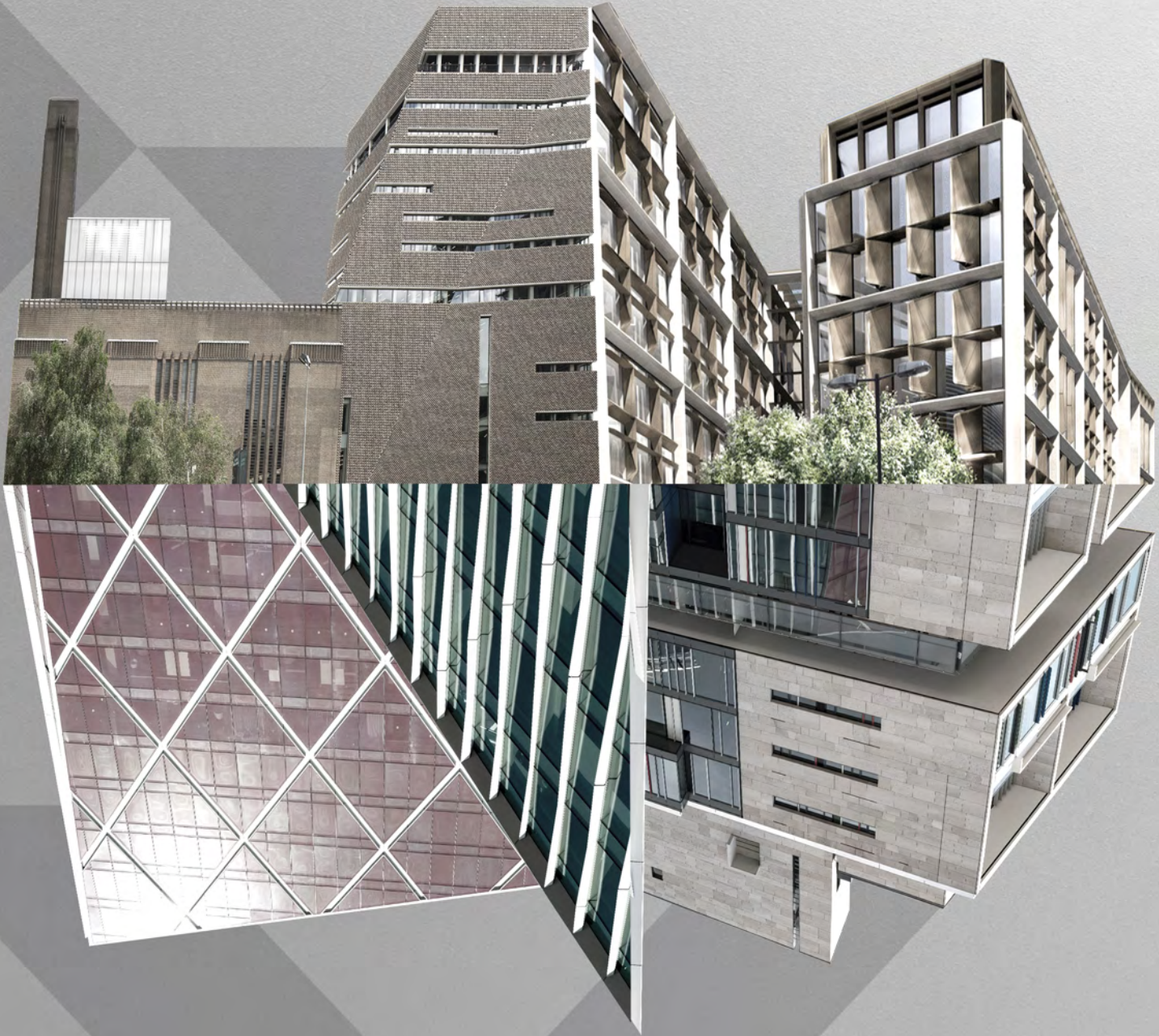


# FINISH

2018 EDITION

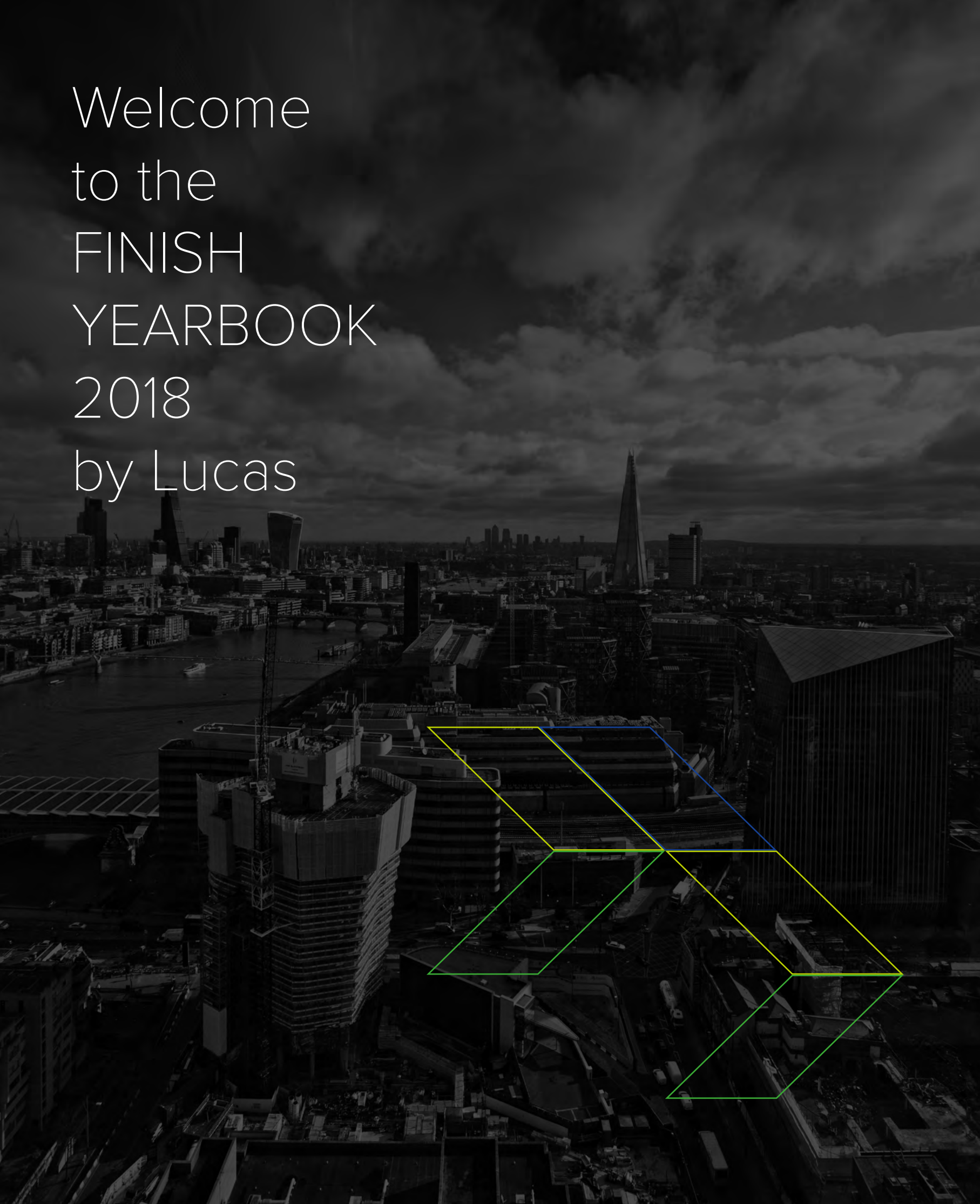
THE AWARD WINNING FIT OUT &  
FINISHING SPECIALISTS



FINISHING  
INNOVATIONS  
& BRAND NEW  
PERSPECTIVES



Welcome  
to the  
FINISH  
YEARBOOK  
2018  
by Lucas





---

## Finish in style

I am extremely proud to bring you our third bi-annual yearbook Finish 2018. I hope you will be as amazed as I am at the quality of content and style that the Lucas team brings to this publication. I believe this edition will prove to be our best release to date.

In here you will find details of the fantastic new Bloomberg European headquarters building that we have recently helped to complete. It has garnered a great deal of news coverage for its wonderful Norman Foster design, its energy efficiency, and the reinstatement of the Roman Temple of Mithras on the original site. However, you will also see how our team was challenged and able to assist in re-evaluating original design specifications to arrive at an innovative, sustainable and cost effective lightweight cladding system with a metal-like surface finish which we developed in house at Lucas. It provides a stunning end result for the amazing eight-level atrium with its breath-taking bronze clad spiral ramp. This is a great example of how our Lucas Lean approach delivers absolute value to meet project demands.

Our determination to adopt new technologies and bring innovation to fit out and finishing doesn't stop here and is paying dividends in other ways, too. We have developed a revolutionary VOC-free, invisible surface treatment for external public spaces in our towns and cities that can be applied to both

horizontal and vertical porous masonry surfaces like stone, concrete and brick. It will literally clean the air we breathe. Naturally we've called it Lucas Breathe. You will see that through photo catalysis, the product reacts with sunlight when air pollution (NOx) is present, turning it into harmless trace elements. Lucas Breathe will make a real difference to the air quality of the built environment.

To help promote healthy lungs and combat air pollution we have partnered with the British Lung Foundation as a Living Well Alliance founding member and strongly believe we will be able to bring awareness to our industry and real value to our clients' projects, helping them meet the new WELL certification standard.

We have our six year partnership with McLaren to thank for helping us understand how new technologies are so important to our business and the development of our service delivery. The F1 and engineering specialist helped show us the way, and that in turn enthused us to adopt a "lean" way of working whereby we constantly strive for improvement.

Meanwhile, Lucas has also been working hard behind the scenes to arrive at a solution to the well documented skills shortage that impacts construction and could likely grow worse after Brexit. We have a passion to bring youngsters into the industry which offers them so many opportunities but which doesn't get the promotion it deserves in schools and colleges. So read about our new partnership with London South East Colleges, our City & Guilds approval and our comprehensive range of distance learning videos.

We already welcome contractors, clients, architects and specifiers to Lucas HQ where they can see for themselves our latest technologies and where our Innovation Centre helps them realise product and design solutions for their projects. But in the New Year we will be opening the new Lucas Visitor Centre which will house a museum area telling

the story of Lucas spanning six decades and celebrating the many innovation milestones we have achieved, and the step changes we have made to help drive our industry forward.

There will also be a learning area to inspire school children, and a Lucas Teamstore where we will sell branded merchandise, a range of Lucas ProTools and some of our innovative surface treatments. The Lucas Visitor Centre will also be the venue for a monthly science learning class delivered by our own in house R&D specialists and chemists, and will focus on coatings technology and surface treatments. It will be delivered as an in house training course to improve our own team's knowledge out on site, training up colleagues to be "surface treatment advisors". We will also share this knowledge with a wider audience of schoolchildren and colleges, clients and suppliers.

Finally, I would like to say a heartfelt thanks for all the support we receive from our fantastic clients, our great suppliers (many of whom you will find in these pages), and of course to the whole team at Lucas. I think we achieve something amazing every day. Long may it continue.

**Danny Lucas**



Executive Chairman &  
Managing Director

# Contents

Lucas News

1-7

Nova Victoria

9-11

Lucas College  
Partnerships

12-13

One Angel Court

14-15

Bracknell  
Shopping Centre

16-17

One Crown Place

18-20

Six years in the fast  
lane with McLaren

22-27

Bloomberg

30-35

A leaner way of  
working – simple  
steps lead to greater  
efficiencies

36-37

Tate Modern  
Extension

38-39

A Smarter Chip  
off the Old Block

41-43

Starting a new  
conversation about  
our technology-  
based industry

44

Mental Health  
Initiatives

46-47



Testimonials  
49-50

---

Lucas in numbers  
52

---

Lucas launches  
“Brush up with Barry”  
training videos  
54-56

---

Lucas Apps  
57

---

Lucas Breathe  
58-59

---

Awards  
60-61

---

Lucas Social  
63-64

---

Lucas and the British  
Lung Foundation  
67

---

The Story so far  
68-69

---

Changing  
Perspectives  
71-72

---





## We scoop another tall City signature building

Our painting teams are being deployed at another new tall City building currently under construction. This time we have secured the “shell and core” contract for 70 St Mary Axe, a 21 storey office development dubbed “The can of ham” for its multi scale design.

The new building is within a cluster of tall City buildings, each with their own distinctive shape and silhouette. It will have an elegant curving profile with eye-catching exterior fins, and will provide some 300,000 sq ft of office space. The building is targeting a BREEAM excellent rating.

The basement of the building has been constructed and for phase 1 we are applying protective coatings to all the concrete floors and dust sealing all surfaces. We will be painting all walls, blockwork and concrete throughout the area.

When the upper floors have been built we will be painting all the perimeter of the core, lobby and lift areas, stairs and back of house areas.

The developer of the building is TH Real Estate and the Main Contractor is Mace. Completion is due at the end of 2018.

## Proud to be listed among fastest growing companies in Kent

We have made it onto the Kent MegaGrowth50 2017 organised by the KM Group.

The league table is for profitable, private businesses in Kent recording growth in sales over the last four years.

We have been here before, earning a place in one of the first MegaGrowth league tables back in 2001. We were also ranked 8th in the Business XL magazine’s Top 50 Rising Stars, a magazine aimed at entrepreneurs.

Lucas is always proud when our successful growth is acknowledged by outside agencies. We strive to provide an excellent service to all our customers and maintain strong relationships to merit repeat business as a preferred member of their supply chains.

## We have reached completion of all MBO financial commitments

We have completed all our financial commitments in connection with the 2010 management buyout (MBO) of the company which saw Executive Chairman and Managing Director Danny Lucas take over majority ownership of the family business he joined aged just 15.

Completion has taken four years less than expected during which time the turnover of Lucas has risen from £7 million to a record £30 million in 2016. Our most important business goal, however, is to develop long term, strategic partnerships with major blue-chip contractors whose workstreams help to generate repeat, quality new business opportunities for Lucas. Which is why we are delighted to be working with a growing group of major clients such as Mace, Stanhope, Berkeley Homes, Sir Robert McAlpine, Lendlease, Multiplex and Canary Wharf Group.

We have been advised along the way by Meta Corporate Finance and have now secured new financial facilities with HSBC to make further investments in the growth of our operations.

Danny Lucas said: “My ambition is to lead Lucas through a period of controlled growth and to maintain our reputation for delivering excellent projects and levels of service. Gathering awards such as the Construction News Specialist Contractor of the Year Award (under £100 million turnover) is gratifying confirmation that we have the right formula.”

We specialise in branded content and film production. LUCAS have utilised our services for many years. Our crews are CSCS qualified, we can operate in your environment.

As films are 6 times more effective than mail or print based marketing don't hesitate to contact us to discuss content and creative ideas.



t: +44 1252 728740  
e: enquire@artifexmedia.tv



**built for:**  
marketing

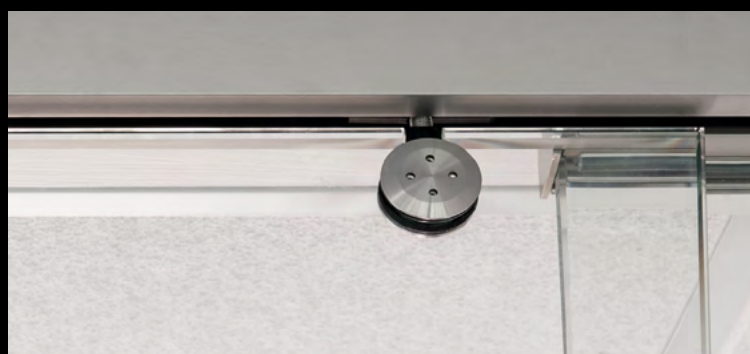
Award winning marketing led business consultancy, providing board level resource and a marketing outsource opportunity. Strategic marketing planning and research, supporting future business plans through to creative and digital design.

Project Managers of **FINISH** 2018

T: 01580 213481  
[www.builtformarketing.co.uk](http://www.builtformarketing.co.uk)



# A DOOR IS ONLY AS GOOD AS ITS IRONMONGERY



**HARBRINE**

ARCHITECTURAL  
IRONMONGERY

Tel: 020 8980 8000

[sales@harbrine.co.uk](mailto:sales@harbrine.co.uk)

[www.harbrine.co.uk](http://www.harbrine.co.uk)

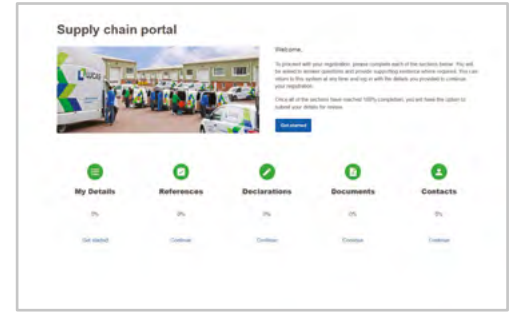
Specification

Supply

Project co-ordination

Harbrine Limited 27/31 Payne Road, London E3 2SP





## Achieving an even BIGGER milestone of 1.7million hours of safe working

Following on from the success of our comprehensive health and safety regimes where we managed to clock up over one million hours of safe work without a reportable accident or incident; we have done it again by reaching over 1.7 million hours of safe work!

At Lucas, we are constantly beating expectations by going above and beyond to ensure we maintain and hit top performance marks in our individual project health and safety league tables. When we reached our one million milestone, we were proud. To reach a 1.5million milestone, we are even more ecstatic.

“Safety as standard” is an important daily Lucas regime which forms part of our Workforce Engagement Programme. We adhere to an externally monitored safety training programme and maintain an all-encompassing matrix monitoring every operative’s competencies, qualifications, safety awareness and upskilling.

We take our health and safety very seriously here at Lucas. Whether it’s a major incident, or a minor incident, we will always encourage our operatives to report and photograph any “near misses” no matter how big or small. We do this by using an easy to use smartphone app that automatically feeds back the information to our safety leadership team to analyse, spot trends and learn from the experience which all helps to prevent accidents.

## Painting a bright future with our Contract Partnership

Lucas has completed its independent reassessment as a certified Contract Partner with Dulux Trade achieving a fantastic 97% score after inspections at a number of our sites and Head Office operations.

We have been a Contract Partner of Dulux Trade for six years and our scores have increased each time. We attained full marks in many categories including the organisation and inspection of our work, our management of subcontractors, materials and equipment control, and our health and safety and environmental management.

Overall we had super scores for our business management, on site workmanship and customer service and loyalty to Dulux.

Our link up with Dulux is tremendously important to us. The partnership demonstrates our commitment to quality, helps us to be innovative and to develop skills across the business. It also helps to promote our abilities, quality workmanship and trustworthiness in the market place.

## New supply chain portal launched

Lucas has launched a new supply chain portal via the Lucas website that makes registering to be a member of the Lucas supply chain a much simpler, but also more assured process.

Companies will be taken through a five stage registration process and because they can register login details they will be able to start the process and return to complete it at any time.

The five stages require the registration of the applying company’s details and then references from previous projects. The third stage is to declare accreditations from any member organisations belonging to Safety Schemes in Procurement (SSIP), the umbrella organisation that facilitates recognition between a wide range of health and safety schemes and which Lucas accepts as pre-qualification.

The fourth stage is to log all documentation providing supporting evidence to the information provided by the applying company and the final stage is to record relevant company contacts such as project managers, site safety inspectors and accounts contacts.

The new portal is timing sensitive so that any documentation that is about to run out such as an insurance certificate for example, will trigger an automatic reminder to our supplier that it must input a new certificate to remain qualified.

WMS ARE A LEADING SUPPLIER AND INSTALLER OF UNDERFLOOR HEATING AND COOLING SYSTEMS FOR NEW BUILD DEVELOPMENTS IN THE UK, DELIVERING SUCCESSFUL PROJECTS SINCE 2003.



**AmbiSolo**  
Low Profile System



**AmbiLowboard EPS**  
Low Profile System



**AmbiDuoclip**  
Screeded System

### Why WMS

We understand that getting projects over the line on time, achieving budgets, meeting the specification and enjoying the journey, is essential for the successful outcome of any project and the sustainable management style for any contractor. We also recognise that the underfloor heating and subfloor package is renowned for causing large variances between entry and exit costs, planned programme durations and other consequential items, all of which can make the process reactive and often painful.

This is where WMS can add value. We only ask that you involve us early on in the project – preferably before the package is scoped out. Our team of Pre-Contracts Managers look forward to hearing from you.

### Recent Projects Completed



Nova Victoria



Twenty Grosvenor Square



One Tower Bridge

WMS Underfloor Heating Ltd

Heritage House, Woodside Lane, Brookmans Park, Hertfordshire, AL9 6DE.

T 01707 64 99 22

wms-uk.com

# Nova Victoria

Lucas has completed a series of major painting and fit out packages at the £2.2 billion Nova Victoria, one of London's biggest redevelopment projects.

**PROJECT**

Nova Victoria

**CLIENT**

Landsec

**CONTRACTOR**

Mace

**VALUE**

£13m (total project)



---

Danny Lucas,  
Executive Chairman and Managing  
Director of Lucas, said:



“Nova was a major project for Lucas. As well as a project manager we deployed four site managers for the different packages. We were also working at South Bank Tower at the time. These were two large scale projects successfully running simultaneously with multiple Lucas teams, demonstrating the **scale** of **work** we now **achieve**.”





## Nova Victoria

**Phase 1 of this landmark development included the building of two office buildings, Nova North and Nova South, a new luxury apartment complex called the Nova Building, three basement levels of car parking space and plant rooms, and integrated retail and public realm spaces.**

We won the contract to decorate throughout the 170 newly built apartments and penthouses, working closely with our fit out teams completing complex packages in the penthouses.

The most demanding quality standards and specifications applied to the decorations of the luxury apartments so the teams welcomed the use of our newly launched Lucas ProFinish brushes.

We also decorated the shell and core of the two commercial buildings at Nova Victoria and applied specialist coatings throughout the three basement levels which stretch underneath all three buildings right across the site.

Specialist protective resin coatings were required in plant rooms and other back of house areas and we applied a specialist DeckMaster multi-coat system for the demarcation of the car parks, loading bays and ramps.

Our main fit out contract was for the 21 luxury penthouses in the Nova Building where we collaborated closely with Mace MEP and took over responsibility for all other trades working on this aspect of the project. Our “super fit out” approach at Nova gave the main contractor and developer the opportunity to slice away parts of the project and de-risk, with Lucas the single point of responsibility.

The construction project was carried out on a 5.5 acre island site in the middle of one of London’s busiest one-way systems, so our experienced logistics centre played a big part ensuring that materials and equipment arrived on site at just the right time and in perfect condition despite a very difficult haul route.

# Lucas College Partnerships

APPROVED CENTRE

City & Guilds  
014213B



## Lucas launches college partnership to boost training and apprenticeships

**Earlier this year Lucas appointed its first fully qualified training and apprenticeships manager and went into partnership with London South East Colleges in a ground-breaking initiative to create a practical solution to the widely-reported skills shortage in our industry.**

We believe that by bringing together college vocational courses with practical, on site training we can make a real difference to training new recruits and, just as importantly, maintain their interest in learning new skills.

Why isn't this happening at the moment? Lucas has been concerned that schools and career advisers fail to recognise the prospects for progressive career development in the modern construction industry. Those young people who do start college only-based skills courses all too often drop out for the simple reason that they find them repetitive. Nor are the students always exposed first hand to the interesting challenges and opportunities available to them in the industry.

Danny Lucas discussed these issues of training and the skills shortage in construction with Government and concluded the best way forward must involve companies like Lucas in the training process. We can convey the true site experience and demonstrate the full range of skills and disciplines required to be a successful operative today.

We recruited Barry Mason to the new position of Training and Apprenticeships Manager. He joined Lucas with over 30 years' experience as a painter and decorator. However, he is also a qualified assessor and instructor and is a former lecturer at Shrewsbury College. One of his first tasks was to embark on making a series of practical training videos with Lucas called "Brush up with Barry" (see page 54).

He also helped us achieve a major milestone when we secured accreditation from City & Guilds to be able to assess candidates for their NVQ Level 2 qualifications. That paves the way for us in partnership with London South East Colleges to build a satellite training academy, the Lucas Centre of Excellence, and develop full NVQ and City & Guilds diploma courses with a mixture of classroom theory, E-learning or distance learning for young students, and practical site-based tuition, experience and formal assessment.

Mark Reynolds, the Chief Executive Officer of Mace and recently appointed to the Construction Leadership Council to head the CLC's skills workstream, said: "This is a fantastic initiative by Lucas and should be applauded. At a time when skills are at a premium, it is a great credit to everyone at Lucas for showing true leadership."

Bob Nosedo, Sector Skills Executive at London South East Colleges, said: "A partnership between the college and Lucas is definitely a step in the right direction if we are to address the skills shortage. I think we all appreciate that the education sector and industry need to collaborate more and allow industry to have a greater say in the delivery if we are to prepare students correctly.

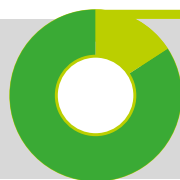
Danny was recently a member of an industry panel at the college's Bromley campus along with others like Charlie Mullins who runs Pimlico Plumbers. The panel was able to deliver interesting and valuable insights based on their experiences to over 80 enthusiastic students and apprentices. This dialogue with industry is an important addition to their learning experience.

Lucas has also been working with the charity Bounce Back that works with ex-offenders, so we're hoping that not just school leavers but others in our society can benefit from our training and our videos, and will realise the opportunities open to them in our industry.

Our efforts are already being recognised in the industry with Berkeley Group presenting Lucas with one of their Apprentice Awards 2017 in the Best Subcontractor category. Companies like Lucas can and should make an important contribution towards solving the skills shortage in construction.

**16% (31,420)**

According to KPMG and the Construction Skills Council there was a labour deficit of



painters and decorators joining the construction industry.

Danny Lucas said: “It is very important that a company like Lucas can become part of the training process. We will **enthuse** a **new generation** of painters and decorators with what our industry can offer as they make their journey towards **full qualification** and a career in construction.”



# One Angel Court

Lucas has completed a major fit out at One Angel Court, an important office redevelopment within the Bank Conservation Area in the heart of the city.

**PROJECT**

One Angel Court

**CLIENT**

Stanhope

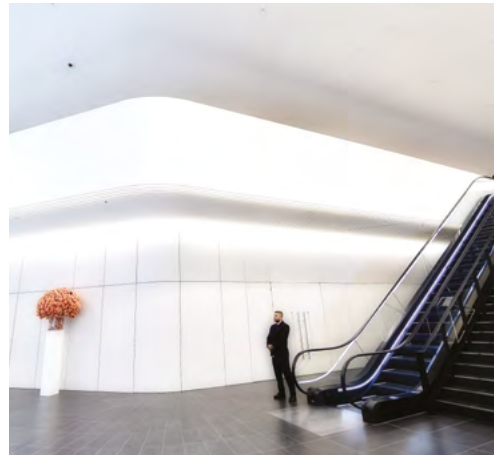
**CONSTRUCTION MANAGER**

Mace

**VALUE**

£5m





## One Angel Court

**The building is a 24-storey tower development which provides 300,000 sq ft of quality office accommodation, high level garden terraces, restaurant, retail and public urban spaces.**

Installations have included a number of unusual features for the spectacular double height entrance to the building that leads up to the mezzanine floor reception area. We laid porcelain floor tiles in complicated circular patterns and have fitted reinforced glass feature wall cladding and metal acoustic sound-deadening panels.

We installed two bespoke metal steel staircases and balustrades from the ground floor up to the reception, a feature metal screen and balustrade around the mezzanine balcony and trowel applied a special Armour-coated plaster work and wax polishing it for a special effect.

We also completely fit out basement showers and changing rooms, including all the mechanical and electrical work, and provided decorations and specialist floor finishes to back of house areas on the lower floors as well as fitting out back of house staircases throughout the building.

This has been a joint development between Stanhope and Mitsui Fudosan and the construction manager is Mace. The new building is located less than a minutes walk away from the Bank of England and contains all the facilities needed for entrepreneurs and business people working inside the offices. Additionally, restaurants including Coya, Natural Kitchen and Notes are expected to move into the building.

Elements that make up Angel Court are the Garden Floors and the Sky Floors, roof gardens and terraces, and a vibrant new public realm with an astonishing view of the city skyline. And an extremely smart lounge and bar on Level 7.

The Level 7 facility is a high quality leisure and meeting space within the building. Our scope of works included drywall partitioning and the manufacture and installation of a bespoke bar and pantry with brass, stone and timber finishes complete with integral lighting. Other elements include the supply and installation of catering equipment, solid timber flooring, timber door sets, electrical lighting and power installation, mechanical ventilation and drainage installation, soft flooring, external louvres and high end decorations.



# The Lexicon

Lucas has a proud history of working on major schemes in the retail sector for the nation's favourite High Street multiples, for the biggest shopping centres in the country and for some of the finest stores in the West End.

**PROJECT**

The Lexicon

**CLIENT**

Bracknell Regeneration  
Partnership

**CONTRACTOR**

Mace

**VALUE**

£2m





## Lucas working with retail

**Marks & Spencer, Sainsburys, Peter Jones and Reiss to name but a few, and we have delivered some iconic work at major shopping centres over the last 20 years such as Bluewater and Westfield Stratford City.**

So we were delighted to win and complete a complex series of painting and refurbishment packages at the new Lexicon shopping centre in Bracknell, part of a major £240 million scheme to regenerate the town centre.

Our workload trebled during the course of the project for Mace, testament to our flexible approach and reflecting our ability and willingness to step in and do whatever is necessary to ensure the smooth progress of construction and finishing.

We applied Armorcoat polished plaster finishes to walls, staircases and lift lobby areas in the main double-height entrance of the shopping centre, following a specified colour palette.

We delivered a customer toilet fit out package, installing cubicles, sanitary ware, tiling and panelling, and we also completely fitted out a facilities management suite for the operators who now oversee the shopping centre.

A Lucas specialist painting team undertook the application of a Stirling Lloyd resin flooring system for the new multi storey car park serving The Lexicon, coating all floors and spiral ramps with a highly durable methyl methacrylate (MMA) treatment, and painting the demarcation lines and areas for directing motorists.

Our Innovation Centre back at Lucas HQ developed a complex system of stencils allowing our operatives to painstakingly recreate a representation of the distinctive artistic surfaces of the new Fenwick store, in the car park areas adjacent to the store – providing a visually pleasing way to direct shoppers to their destination.

We also undertook further packages including a major refurbishment and specialist painting programme to an existing car park that also serves the shopping centre, undertook sub-floor enabling works in a new multi-cinema complex ahead of the installation of auditorium seating, and insulation works in two new stores in the centre.

Lucas has it covered on the High Street, in the West End and out of town.

# One Crown Place

Lucas has just completed a spectacular and highly original marketing suite for a new development underway on the northern edge of the City of London.

## PROJECT

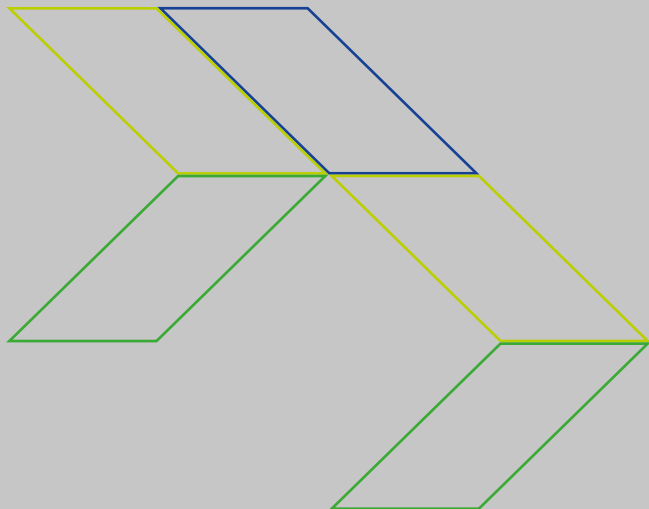
One Crown Place

## CLIENT

AlloyMtd

## DEVELOPMENT MANAGERS

CBRE







## The Marketing Suite

**Located north of Moorgate, the marketing suite has been built in an existing office building on Wilson Street, which sits within the development.**

The developer were AlloyMtd and the development managers were CBRE, who we worked very closely with in the leading up to production. We also worked closely with architects Kohn Pedersen Fox and interior designers Bowler James Brindley where we created an amazing full-size one bedroom apartment with no exterior walls or ceiling, sitting in the middle of the warehouse.

The development includes two new 32 and 29-storey residential towers which have been built on top of a new podium building which

Incorporates a Victorian warehouse facade, plus a row of refurbished Georgian houses for the new hotel, restaurant and leisure space.

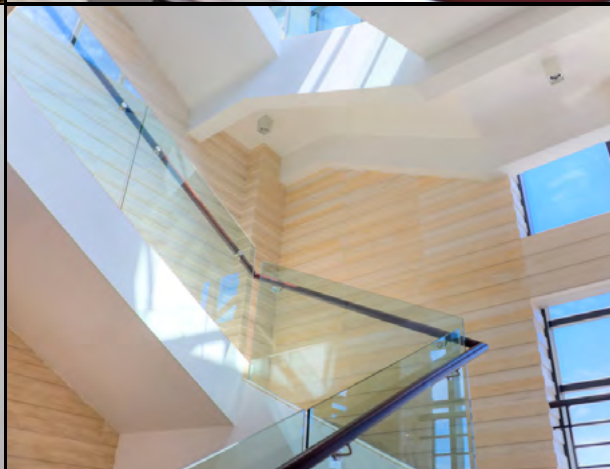
Installations include a dry-fit kitchen and bathroom, all the mechanical and electrical installations including the lighting, power design and heating and cooling design. Joinery elements which include kitchen and bathroom units, worktops, folding glazed doors, fixed glazed bathroom screens, doors and ironmongery, external cladding fins in painted MDF, a library unit and a sales/receptionist desk.

Fit-out involved wall tiling, dry lining, a series of high standard decorations, sanitary ware, timber front doors, external louvre and a single toilet fit-out.



# TiGlass

Bespoke glass for your home and office



At TiGlass we create beautiful decor solutions in glass for commercial spaces. We are specialists in providing and installing bespoke coloured glass.

SPLASHBACKS

SHOWER SCREENS

MIRRORS

WALL FINISHES

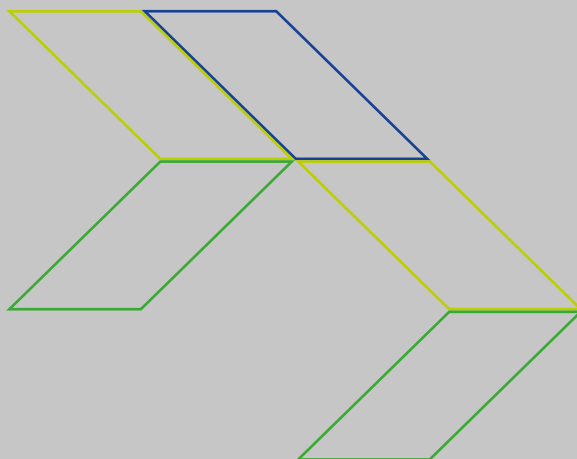
Please get in touch

Our customer services team will be happy to answer your questions personally.

☎ 01279 412112    🌐 [TiGlass.co.uk](http://TiGlass.co.uk)

# Six years in the fast lane with McLaren

In the six years that Lucas has partnered with the McLaren Technology Centre our use of new technologies to support our fit out and finishing services has advanced out of all recognition. That is because both our approach to running our operations and the services we deliver have been hugely influenced by our close relationship with the Formula 1 and engineering specialist.





# McLaren and Lucas Partnership





## Working with McLaren

**Our relationship with McLaren started back in 2011 when we successfully completed a series of fit out and finishing packages at McLaren Group's new sports car production facility at Woking in Surrey. This is no ordinary facility. It is part of the iconic Foster + Partners designed McLaren headquarters opened by David Cameron, the then Prime Minister. It has to be one of the UK's best headquarters buildings.**



It was also overseen by McLaren charismatic chairman at the time, Ron Dennis, famous for his exacting standards and attention to detail. And much to our good fortune, he found a like-minded enthusiastic company leader in Danny Lucas.



In our first packages for McLaren we developed a bespoke resin coating to give an ultra high gloss "mirror" finish to the floors in the facility and which is now used in their pit garages. We call it the "McLaren floor". We also applied a range of decorative and protective treatments to all parts of the building, including the main production halls.

One of our most challenging tasks was to treat all high level steelwork within 10 days in the main paint shop whilst the car production line continued its pre-production commissioning programme. The architects and McLaren approved our recommendation to adopt the use of our own MSP (Multi Surface Paint). This allowed the team to vacuum-clean the steelwork and apply coatings whilst operations continued directly beneath. The result was an extremely durable, high quality finish completed on time and to McLaren's exacting standards without any delay to its own operations.

Our fit out team was contracted to fit out the VIP toilets having previously worked on the main toilet fit out and shower areas at the centre, and which like everything else were finished to the highest standards for McLaren. There was design input from both McLaren and ourselves and the attention to detail was like nothing we had experienced before.

Ron Dennis said at the time "the excellence of your work amply demonstrates that we share a passion for quality and detail. We are delighted by your ability to match or exceed all of our expectations within a very tight time frame. It is abundantly clear that we will continue to work together." And that's when the partnership formed.

Danny Lucas in declaring the official partnership with the McLaren Technology Centre said "It will give us a prestigious platform for marketing and communications as we strengthen and grow our successful quality brand in the construction industry".

What it also did was to spur our determination to bring new technologies and new ideas to our operations. We invested in full scale laboratory facilities that allowed us to develop new coatings with new properties, and eventually open a completely new Innovation Centre with facilities to allow architects, designers and specifiers to envisage new solutions to their new build requirements

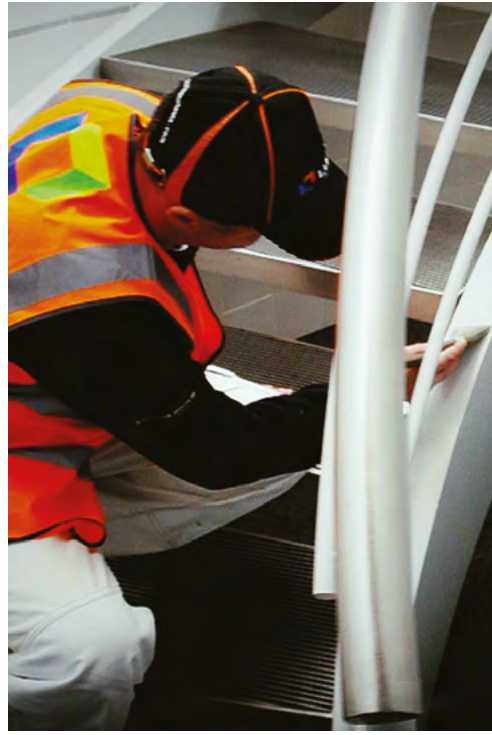
In 2015 we completed a detailed sequence of fit out and finishing projects for McLaren's new, high-tech Thought Leadership Centre (TLC) on the Woking campus. The new facility was created for presentations, interactive forums and the exchange of ideas. It is a unique, experiential environment, incorporating cutting-edge audio visual display, sound and lighting, plus real-time data access and simultaneous language translation.

Simon Lake, General Manager of McLaren Group, sums up our work with McLaren perfectly.



“To create and maintain a facility that lives up to our vision of **perfection**, we need to work with **world class partners** who share our commitment to **excellence** and total attention to detail. Lucas has been one such partner that has made a significant contribution to the creation of our inspiring working environment and to the **impeccable** condition it remains in today.”





In keeping with McLaren's reputation for innovation and attention to detail, the fit out and finishing in the TLC imposed the highest demands on our team.

A long, sweeping tunnel links the new Thought Leadership Centre with the rest of the campus. Throughout the tunnel McLaren required a flat, black, seamless surface interspersed with white squares on which to project film and images. Lucas laboratory technicians rose to the challenge and created new variants of our "Extraflex" coatings that flex and hold to the extremely long surfaces, and multi surface paints (MSP) to provide the reflective qualities required for clear moving images.

MSP was used elsewhere in the project for blacking out high level surfaces above suspended ceilings and we re-treated powder-coated grills to create a perfect factory finish. Indeed the use of MSP throughout the project for a variety of coating solutions is testament to the versatility of the product.

The team also made full use of our large off site spray booth facility at Wrotham HQ to produce a super high gloss finish – we call it the "RazBak" system after our technicians who developed it – for wall and ceiling panels fitted in the café area and elsewhere in the TLC. We even created a special matching rubber-effect coating for the frames surrounding the computer screens and tablets which feature in front of every interactive workstation in the auditorium.

Lucas continues to deploy operatives at the Woking facilities providing constant maintenance to architectural metalwork, cladding and other features so that the McLaren headquarters buildings always have that factory-finish look.

During these partnership years, Lucas has been able to use McLaren's headquarters as a living showroom for our fit out and finishing services. Having the ability to show clients what we can do in such an iconic building through specially arranged visits has been fantastic.

And not just clients. Working on a project close by the Royal Chelsea Hospital provided us with the perfect excuse to arrange a dream trip for three Chelsea Pensioners to McLaren's headquarters. We took Don Avery, Ken McDonald and Alan Rutter down to Woking. They had a brilliant day and met two old hands from McLaren, Ray "Tex" Rowe a long time mechanic with McLaren from the mid-1960s and Neil Trundle, chief mechanic for Ayrton Senna and Alain Prost in the 1980s and who now looks after McLaren's collection of historic racing cars.

The VIP launch of our own range of premium quality tools, Lucas ProTools, at the McLaren headquarters was another highlight of our partnership. The concept of a range of beautifully made tools that last a lifetime, and which painters and operatives can be proud to own, owes its origins to the importance we have placed on technology, quality and perfection and derives from the McLaren partnership. The Lucas ProFinish brush has been put to good use at McLaren countless times.



## *Beautiful Oak Flooring*

OAK ENGINEERED TIMBER  
Domus Wood Collection  
Floor: Mathers Tallow WDOP 010  
Chevron 45

Project: Bearsden Burgh Hall, Glasgow

**Clerkenwell**  
50 Great Sutton St  
London  
EC1V 0DF  
t 020 7458 4000

**West 1**  
23-25 Eastcastle St  
London  
W1W 8DF  
t 020 7458 4005

**Battersea**  
60 Queenstown Rd  
London  
SW8 3RY  
t 020 8481 9509

**Surrey (Outlet)**  
3 Molesey Business Ctr  
Central Ave, West Molesey  
KT8 2QZ  
t 020 8481 9588

# *Luxurious Porcelain Marble*

MAGNUM COLLECTION  
Lightweight Porcelain Slabs  
Wall: I Classici DMAG 50 Chain



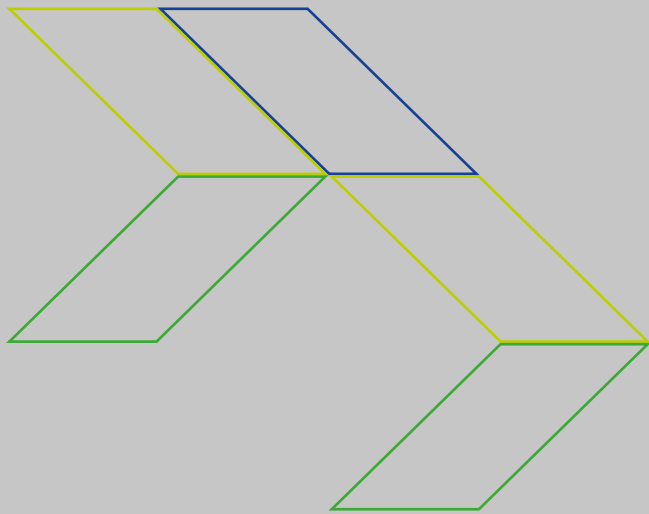
Domus is a 'one stop shop' for innovative tile solutions and oak, laminate and vinyl engineered flooring. Our specialist teams will assist

with product selection, sampling, M40 and K21 specification documents, care and maintenance advice, and on-site project support.

**DOMUS**  
domusgroup.com

# Bloomberg

Lucas has completed a series of important packages on the new Bloomberg London Building which promises to be one of the most significant and highest quality City of London developments for many years.





**PROJECT**

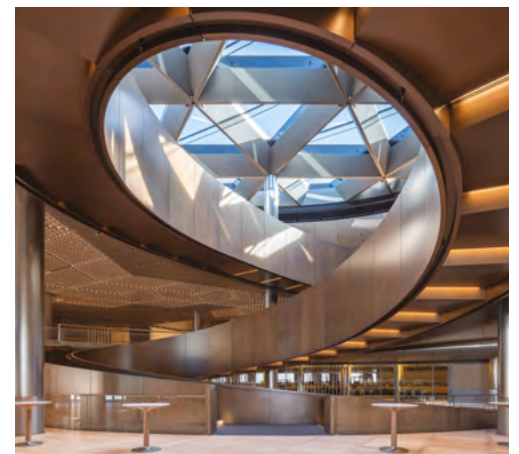
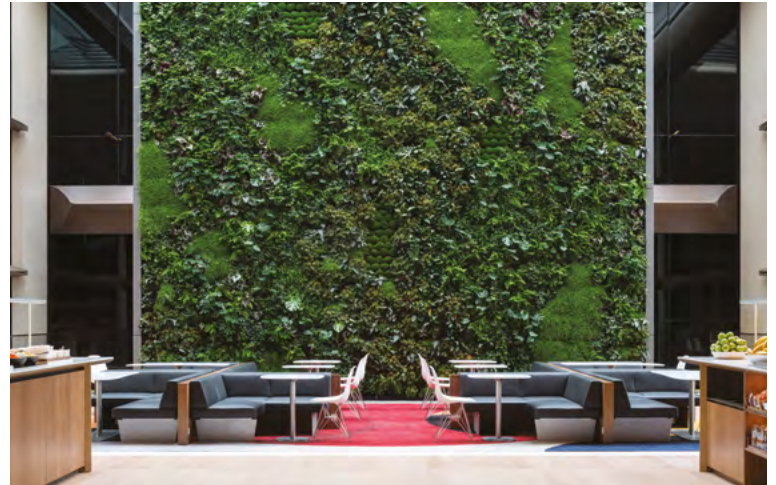
Bloomberg European headquarters

**CLIENT**

Bloomberg

**CONSTRUCTION MANAGER**

Sir Robert McAlpine





## Using Lucas technical knowledge and experience

**Our work for Sir Robert McAlpine included the deployment of both painting and fit out teams. Our ability to develop practical solutions to construction site challenges means Lucas's technical knowledge base and experience made a major contribution to the spectacular interior atrium space that is a key feature of the building.**

First off we prepared and applied protective specialist coatings to floors, walls and ceilings throughout the four basement floors and to all plant rooms. Our fit out team carried out a complex, back of house fit out with a heavy focus on mechanical and electrical elements which included security and facilities management areas, washrooms, shower rooms and changing facilities.

This development consists of two high-grade specification office buildings as well as retail units on the ground floor and a new entrance to Bank underground station. There is a public thoroughfare between the north and south buildings.

The Foster + Partners design specified curved bulkhead cladding panels to finish off each storey inside the amazing eight level internal atrium, where the centrepiece is a stunning spiral walkway rising up through the atrium from the ground to level eight.

The cladding was to provide a metallic graphite finish in the atrium so the Lucas technical team developed a modified glass reinforced gypsum (GRG) substrate and spray applied a Perlata finish from Muralplast's ArmourColor range. We fabricated the cladding off site, gave each piece a unique code, sprayed them in our own spray booth and delivered them to site on a just-in-time basis.

We also supplied similar GRG panels for the reception area with perfect surfaces ready for a commissioned artist to provide bespoke public artwork for this exceptional building project.

Photography by:  
Nigel Young/Foster + Partners  
James Newton







*boreham media*



**Great stories,  
beautifully told**  
**Video and  
stills for the  
construction  
world**

Call: 0207 206 2792 or 01932 563318 Email: [info@boreham.co.uk](mailto:info@boreham.co.uk)  
[borehammedia.co.uk](http://borehammedia.co.uk)



# A leaner way of working – simple steps lead to greater efficiencies



# KAIZEN

**Kaizen meaning “improvement” is a Japanese way of working first introduced by Toyota and others back in the 1950s.**

Lucas has taken on board this business philosophy, and adapted it to our own operations over the last 18 months. We have adopted a lean approach to our business, and the improvement in efficiency both at Lucas HQ and out on site has been exceptional. And it's not rocket science.

Our lean approach means we simplify the way we work, adopt lean principles throughout our administration, logistics and delivery, and achieve an easy flow across all our work processes which eliminates waste.

What does this mean in practice? Our head office teams work in logical clusters set out to mirror the natural flow of projects working their way through all stages of our operations. Clear signage reminds everyone to keep workstreams flowing freely. Filing systems have been simplified and we use colour coding a lot so that colleagues know where everything is.

We have a “history wall” which reminds everyone to be proud of what we have achieved so far, and strive for the very best standards in the future. We want everyone to be proud of their company

We introduced our new way of working at a company-wide seminar and we keep everyone on their toes with “flash” meetings in our offices and out on site, to make sure we are all buying into this transparent approach, and to encourage new practical ideas to improve efficiencies even further. They are always welcome.

Waste arises in:-

- Over processing
- Over production
- Waiting
- Motion
- Transport
- Stock or inventory
- Reworking of defects
- Unused employee genius

Being transparent and honest throughout Lucas allows us to fix problems when we see them, achieve flow in our work processes to cut out waste, achieve pull so that nothing is made or delivered until it's needed, and to review and learn from our experiences. That way we achieve continuous improvement.

# Tate Modern Extension

Lucas painting teams were once again deployed at Tate Modern to provide a fine artistic finish to the galleries and exhibition spaces in the new 10-storey extension which opened in June 2016.

**PROJECT**

Tate Modern Extension

**CLIENT**

Tate Modern

**CONSTRUCTION MANAGER**

Mace

**VALUE**

£500k





## Lucas ProFinish put to good use at the Tate Modern

**The new building, designed by Herzog and de Meuron (who also created the original gallery from the former Thameside power station), provides new places to meet, learn and create and allows Tate Modern the space to display more artworks from around the world. The construction manager was Mace.**

Our operatives adopted both spray and roller painting techniques for the extensive wall areas and used the newly-launched Lucas ProFinish brush for cutting in and finer details, to ensure the ultimate quality finish to surfaces that display important contemporary and modern artworks.

The wall areas are extremely large and up to six metres high, with acoustic perforated plasterboards on perimeter walls. So we deployed large painting teams to ensure that a consistent, uniform finish was achieved to create the perfect backdrop for viewing.

It is wholly appropriate that the new Lucas ProFinish was put to such good use at Tate Modern when the ergonomically-designed brush is itself becoming something of a design classic, receiving an “honourable mention” at the Red Dot Awards for Product Design 2015. It appeared in the Red Dot Design Yearbook and in design museums in Germany and Singapore.

Lucas has a strong reputation for decorating arts and cultural centres having worked on the Royal Shakespeare Theatre at Stratford-upon-Avon, the Firstsite Colchester Arts Building, the Grand and National Halls at Olympia and on the Cutty Sark at Greenwich. Our teams also undertake street art projects such as the Angel Lane Bridge close by the Olympic Park in East London.

design  
 POS  
 web to print  
 litho  
 digital  
 storage  
 fulfilment  
 distribution

9-10 Orchard Business Centre  
 Sanderson Way  
 Tonbridge, Kent TN9 1QG

e: enquiries@cpg-net.co.uk  
 t: 01732 366666  
 www.cpg-net.co.uk



Beautiful Print for Brands That Matter



“It takes 20 years to build a reputation and 5 minutes to ruin it. If you think about that, you’ll do things differently.”

Warren Buffett

Why risk yours?

Minimise your **risk** when you appoint a contractor for any electrical or electrotechnical work across all aspects of design, installation, maintenance, testing, inspecting and monitoring.\*

Find an ECA Member today

[www.eca.co.uk/find-an-eca-member](http://www.eca.co.uk/find-an-eca-member)

✉ [info@eca.co.uk](mailto:info@eca.co.uk)

☎ 0207 313 4800

🐦 @ECAlive



Terms and conditions apply and are subject to change. All rights reserved.  
 Registered in England: Company Number 143669.  
 Covering England, Wales & NI.

THE MOST VALUED  
 SPORTS MARKETING AGENCY  
 IN THE BUSINESS



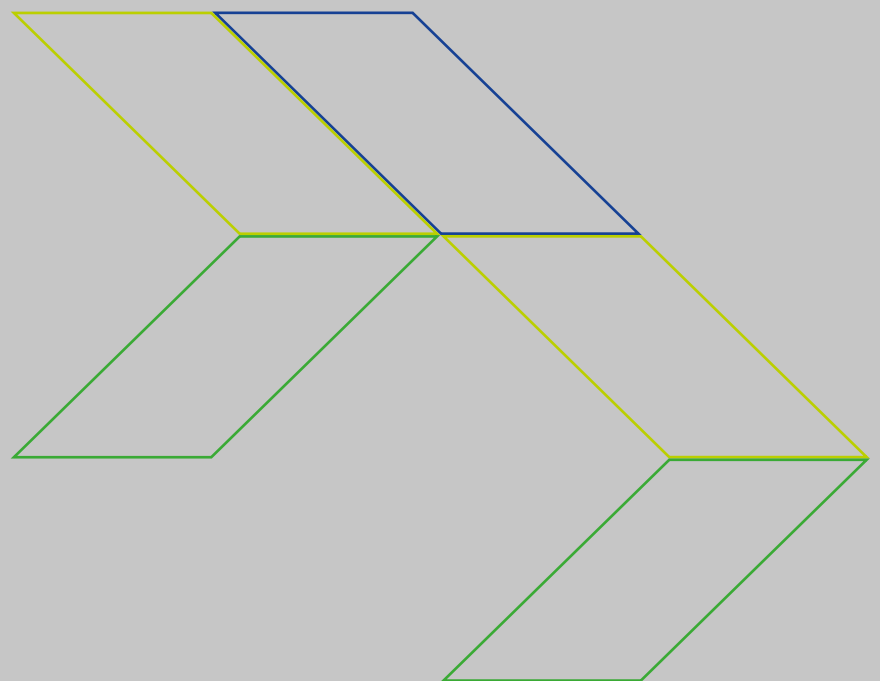
PR & COMMUNICATIONS  
 HOSPITALITY & EVENTS  
 INTERNAL MOTIVATION  
 CONSUMER ENGAGEMENT  
 B2B OPPORTUNITIES



INFO@RIGHTFORMULA.COM | WWW.RIGHTFORMULA.COM  
 LONDON TEL +44 (0) 7974 229 204

# A Smarter Chip off the Old Block

Lucas is re-equipping its joinery facilities at Wrotham HQ which provide us with a state-of-the-art, in-house workshop and the ability therefore to create bespoke woodworking solutions for all our clients' needs.



# A smarter chip off the old block



## Create tailor-made designs

We have a niche set up, fully kitted out with a wall saw, bench saws and drills, bandsaw, new planers and jointers, spindle router and dovetail morticer. We have also appointed a new workshop manager, Neil Staton, who has over 30 years' experience with leading joinery companies.

Although we do not aim to produce products on a large scale, we can create tailor-made designs, test pieces and prototypes and large finished pieces such as bespoke reception desks and office furniture. We also prepare timber panelling, door sets, skirting boards and handrails.

The quality of production is under our own control. We have a bespoke extraction system to ensure the highest quality finish, and all pieces can be precisely colour coated in our adjoining large-scale spray booth facility, and readied for installation on site.

The facility also provides us with the capacity to consolidate supplies and deliver the bespoke components to site on a just-in-time basis.

We are considering extending our off-site "pod" capabilities which have so far included washroom and bathroom facilities, to outdoor living. We are testing designs for an advanced, self-contained garden room/office with a variety of finishes, frameless glass doors and green roofs for a very modern solution to the problem of lack of space encountered by many people living in built-up areas.

Lucas has invested in a range of facilities at Wrotham in recent years. They include our laboratories for paint testing and the development of new coatings with new characteristics and performance qualities. We welcome clients, their designers and specifiers to discover new solutions to their build requirements in our Innovation Centre, as well as our spray booth, the joinery workshop and our logistics centre.

“Our extensive in-house facilities enable us to develop detailed product specifications for BIM purposes, provide bespoke fit out and finishing solutions, to design, prepare and finish components off site, and deliver to construction projects right on time.”



**CHELMSFORD**  
SAFETY SUPPLIES

## LOOKING FOR PPE SUPPLIES? YOU'RE IN THE RIGHT PLACE

Choose Chelmsford today and you'll be able to choose from a huge range of PPE products, including well known brands. You'll also benefit from our expert team, express delivery, a free site survey and our online ordering portal.

**FOR A FAST AND FRIENDLY SERVICE, CALL US ON 01245 355243 TO DISCUSS YOUR PPE REQUIREMENTS!**

Call 01245 355243 Email [sales@chelmsfordsafety.co.uk](mailto:sales@chelmsfordsafety.co.uk)  
Visit [chelmsfordsafety.co.uk](http://chelmsfordsafety.co.uk) Follow us @ChelmsfordSafety

 **PROUD SUPPLIERS TO**  **LUCAS**

# Starting a new conversation about our technology-based industry

---

## I have to get this off my chest.

For as long as I can recall I have been frustrated at the way our sector, and sometimes the whole of construction itself, undersells what it does. Construction is often put forward as a last resort career option to young people and paints a picture that somehow all we're doing is providing a low value, run of the mill service. I cannot count how many times I have heard the phrase "if you can p\*ss, you can paint!"

I have spent the last 35 years of my career at Lucas driving my own agenda of a high quality, cutting edge approach for our business, and we have demonstrated that this has established excellence, innovation and pride in what we do. We give our clients the very best buildings, and have given the Lucas team a sense of pride and a career path that they can truly build on and raise their game.

Despite this, many people in our industry are stuck in the past and project a low opinion of their own businesses and what they do.

I cringe when I see paint trade shows bringing in scantily-dressed models to give away paint brushes and other tools as though they were cheap sweets. Sexist, demeaning advertising that doesn't even try to promote the qualities and innovativeness of a product or service.

I want to start a conversation. About the new developments, new technologies, new products, and new techniques that Lucas and some other leading companies we work with, are introducing into finishing and fit out and into construction generally.

I want us to promote the training and skills development that goes into new apprenticeships. The classroom, e-learning and on site opportunities that are required to develop today's operatives and ready them for the modern construction site.

To show them how new technologies play a major part in their working day, whether in the management of the project they're working on, in the PPE they wear, the environmentally-conscious practices they must adopt, or the smart phone apps and advanced tools they will use.

Newer companies and industries have emerged in other areas of business on a mutual recognition that they are making serious advances in product development and service applications. Communities have formed around them that are absolutely proud of what they are achieving.

Silicon Valley and the likes of Apple of course are a good example, as is the technology, media and telecoms (TMT) companies in Shoreditch and Hoxton in London.

Construction needs its own TED Talks community and I am adamant that Lucas will lead the way and start the conversation with our like-minded partners like Akzo Nobel, DuPont, Mace and McLaren who are prepared to push the boundaries of innovation and "think differently" as Steve Jobs once put it.

The recent independent Farmer Report on Construction says it all: "**Modernise or Die**".

You only have to look at the recent fall of a market-leading company like Nokia to realise that no industry is exempt from eliminating companies that keep their head in the sand. Construction cannot just carry on as before, simply saying "this is how we've always done it!"

Maybe a "**LucasNet**" technology convention is nearer than we think!

PROTOOLS

SURFACE TREATMENTS

MERCHANDISE

BOOKS

DANNY L



PROTOOLS



SURFACE TREATMENTS



MERCHANDISE



BOOKS



DANNY L

# Mental Health Initiatives - how we must deal with stress in our industry

## “Mates in Mind”

---

### At Lucas health and safety is part of our DNA

**For many years now, these twin issues have been at the heart of the way we operate. We insist all our operatives have the right qualifications and training, that they are up to speed with all our best working practices, that they regularly attend safety awareness courses and talks, wear the right personal protective equipment. That they stay safe and healthy on site, and that Lucas always operates at better than best industry practice.**

Mental health is not something that has been at the forefront of our thinking in the past, nor has it taken centre stage in the macho construction industry where personal problems and issues can be seen as a sign of weakness.

Until now that is. Princes William and Harry in recent months have talked about the effects on them of the tragic death of their mother. This has helped bring the issues of mental health and stress onto centre stage. Danny Lucas has recently acknowledged that the profound experience of confronting armed burglars at

his home when a young teenager sent him off the rails for a time, prematurely switching from school to working in the family business where a creative atmosphere and positive thinking helped him carve out a successful career.

So it is good to report that both the industry in general and Lucas in particular are placing great importance on exposing work-related stress and mental health issues, and taking comprehensive steps to help colleagues deal with them.

The Health and Safety Executive has embarked on a **“Go Home Healthy”** campaign which we support, aiming to shine a light on three key areas – lung disease, work-related musculoskeletal disorders and work-related stress. And Lucas has signed up to the **“Mates in Mind”** charity established by the Health in Construction Leadership Group with the support of the British Safety Council.

#### Mates in Mind aims to:

- Raise awareness and understanding of mental health and mental ill-health.
- Help people to understand how, when and where to get support.
- Break the silence and stigma through promoting cultures of positive wellbeing throughout the industry

What we’re doing at Lucas through our Work Engagement Training programmes is to hold regular sessions on stress awareness and wellbeing, helping our colleagues to recognise the tell-tale signs of stress and to be confident in sharing information and overcoming the stigma so often associated with stress and mental fatigue.

“Sadly, construction has the highest proportion of male suicides of any industry. But we are beginning to **break down barriers** and talk openly about stress and mental illness. We are putting in place important measures and practices to ensure all colleagues are aware of the problem, and that our **open door policy** means we will always help them deal with any issues they may have.”

Andy Price is Lucas’s SQE and Operations Director.

We are also introducing entirely confidential online occupational health questionnaires via a specialist professional provider, All Health Matters, where even we do not get to see individual answers. The questionnaires provide a very thorough understanding of how work is affecting the health and wellbeing of our operatives, and of course just as importantly, show the ways they can get professional help to deal with any issues.





**Lighthouse Safety** are proud to be in the background keeping our clients' staff and public safe through our **Health & Safety Consultancy and Training Services.**

**Lighthouse Safety Training Ltd**

18 Ivy Street • Rainham • Kent • ME8 8BE info@lighthousesafety.co.uk

**t 01634 260 631**

www.lighthousesafety.co.uk

## Sign in. Stand out.

A modern, enjoyable way to sign in visitors and staff. Replace your visitor book with an easy to use, customisable experience for only £295 per year.






Start your free 15 day trial today at;  
→ [www.signinapp.com](http://www.signinapp.com)

 **Sign In App**

Developed in the UK  
Prices exclude VAT



No hidden costs, all features as standard including;

-  SMS & email notifications
-  Custom fields & policies
-  Fire / evacuation lists
-  Visitor badges with photos
-  Staff sign in & reports



# Testimonials



“As we approach the final stages of construction, I want to personally thank you for your hard work on the new Bloomberg European headquarters. Building the facility in the heart of the City of London has been a monumental task requiring an extraordinary level of coordination. Your outstanding efforts made it possible.”

---

**Michael Bloomberg - Bloomberg European headquarters**



“I have had the pleasure of working with Lucas at the Berkeley Homes flag ship project Abell & Cleland, particularly my interaction with Mark Bennett, the PM for Lucas on this Project, I have rarely worked with such an enthusiastic manager who focuses on H&S, quality and production as Mark does, I would certainly have Mark on the team on projects going forward.”

---

**Jason Mortenson - Berkeley Homes,  
Project Director, Abell & Cleland**



“Despite looking simple, this project turned into quite a complex refurbishment with a considerable number of design changes that doubled LFO’s package value. LFO managed these changes with an open mind and were very responsive. Craig and his team were flexible, proactive and diligent. Craig and his team were a pleasure to work with and I would definitely use LFO again.”

---

**Matthew Burgess - Lend Lease, Package Manager White City**



“This was an extremely challenging project for a demanding Client however even in the most difficult circumstances the Lucas team remained fully committed and delivered a product of excellent quality.”

---

**Scott Evans, Project Director, Mace Nova, Victoria**

# Testimonials



“Lucas are a proactive contractor delivering a quality product on time and budget. Quick and responsive to changes with the ability to maintain programme. Communication at all levels has never been an issue and its refreshing when you can call the Directors of Lucas and get a response same day if not instantly.”

---

**Jamie Stolworthy, Senior Construction Manager, Multiplex**



“Lucas worked closely with CBRE as the main contractor for the One Crown Place marketing suite on a demanding programme. Lucas were personable, responsive and proactive, always considering what was necessary to meet the launch date as a priority. Lucas responded very well to everything from last minute design changes to additional joinery & decoration works, they were very much part of the success of this project. The quality of workmanship and the finished product is a real testament to the hard work put in by everyone at Lucas. We look forward to working with Lucas Fit Out again soon.”

---

**Patrick Shaughnessy, Director, CBRE, One Crown Place**



“Your Site Manager (Tod), on the Tate project is a first class individual, a good attitude towards safety, responsive, and straddles the lines between commercial opportunity, client focus and quality of product and delivery.”

---

**Peter Reeves, Operations Director, Mace, Tate Modern**



# Better **safe** than sorry...

Brook Security is Kent's premiere security service and has been protecting homes and businesses for more than 20 years.

We are NACOSS Gold accredited and can provide the very best standards of security.



**0800 281 249**

[info@brooksecurity.com](mailto:info@brooksecurity.com)

[www.brooksecurity.com](http://www.brooksecurity.com)

“ We have used Brook Security for all our security alarms, CCTV and fire systems for 10 years now. They perfectly match the criteria we look for in any supplier. ”



**Danny Lucas**  
MD & Chairman



# Lucas in numbers



1.75

million hours worked  
without reportable incident



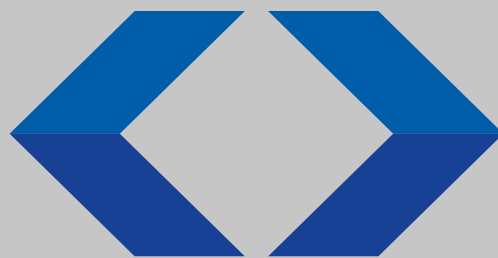
97%

of work completed  
snag free



87%

of work repeat  
order business



4.7

out of 5 achieved on  
quality from client KPI feedback



10

metal tone  
choices of Metalplast



6 yrs

as McLaren  
Technology Partners



31,420

shortage of painters  
joining construction



**ROCAN**  
PRODUCTS

# SOLUTIONS THROUGH INNOVATION

Products tailored to Protect, Clean and Maintain Porous Surfaces



sales@rocan.co.uk +44(0) 203 432 9890  
www.rocan.co.uk



**TFS**

Technical Fixings Solutions Ltd

**HOW TO CONTACT US:**

For all enquires: 01732 885675  
For all enquires by fax: 01732 884543  
Technical support: 01732 883515  
Accounts: 01732 887062

info@tecfixsol.com  
www.tecfixsol.com



Units 2 - 12 - Invicta Business Park - London Road Wrotham - Kent - TN15 7RJ

**Delivery:**

Customer service is very important to us at Technical Fixings Solutions and delivery is no exception. We are proud to have:

- National next day delivery - FREE of charge.
- TFS vans into London every day.
- Timed delivery to sites.
- No minimum charge.
- Same day in the London area via TFS fleet of vans if phoned through before 7.30am.

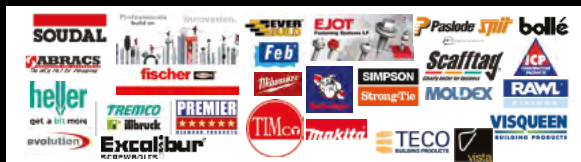


**Services:**

- Proof /Ultimate testing of Anchors and Fixings.
- Abrasive Training.
- Cartridge Tool and Paslode Operative Training\*.
- Qualitative Mask- Fit Testing.
- PAT Testing.



**What else can we supply...**



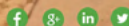
**ONE STOP SHOP** for preparing, cleaning & finishing



The Preparation Group



- Equipment to buy or hire
- Contracting Services
- Accessories to fit all makes of machines



Call +44 (0)1522 561460 www.thepreparationgroup.com



 **LUCAS**  
PROTOOLS

 **LUCAS**  
PROTOOLS

 **LUCAS**  
PROGUARD



# Lucas launches "Brush up with Barry" training videos

---

## Lucas educational programmes

Lucas has launched a comprehensive range of short training videos called "Brush up with Barry" presented by our recently appointed training and apprenticeship manager, Barry Mason.

The professionally-filmed videos form part of our planned training and educational programmes for painting and decorating students and apprentices that we are developing in partnership with London South East Colleges.

The videos are also extremely instructional for DIY-ers who want to improve their painting skills, and likewise to self-employed painters and decorators.

So far more than **50** videos have been completed covering a wide range of painting skills and techniques, with at least another **30** or so to be filmed at our specially-built set at Wrotham HQ. Barry demonstrates best practice preparation, painting techniques for every circumstance, wallpapering, and the use of other finishes. They can be found on our dedicated website, [paintlikeapro.co.uk](http://paintlikeapro.co.uk), and directly by searching on YouTube.





The videos are supported by Lucas ProTools with Barry expertly showing the value and versatility of our ProFinish brush and the newly launched Lucas **PROMITT**, a microfibre painting glove that is brilliant for painting three-dimensional surfaces such as railings, guards, bollards and lamp posts.

The films also demonstrate how to use a range of finishing materials and products, including Festool's range of dustless sanding machines. We plan to take filming out on site in due course too.

Barry Mason joined Lucas earlier in the year. He has over 30 years' experience as a painter and decorator, but he is also a qualified assessor and instructor and is a former lecturer at Shrewsbury College. Through Barry we have been able to gain accreditation from City & Guilds to assess apprentices up to NVQ Level 2 and he is helping to drive our partnership with the college.



“I’m used to **instructing** a classroom full of **students** and feeding off their reactions, but filming to camera is another challenge altogether,” says Barry, “but I’m working with a **great film crew** who know how to get the best out of me!”



www.lucasprottools.com

# Lucas Apps



## Exploit the latest communication technologies for safe and efficient on site working

**Lucas has developed several new apps for our everyday operations at Lucas HQ and for our managers and operatives out on site. These apps keep us all connected and make for a much more efficient way of working. They provide our clients with information about our colleagues' skills and qualifications, and keep our people safe while we provide our efficient suite of services.**

Our latest IT system enables us to closely monitor progress on all projects. It's called the "Project Dashboard" and allows our head office team to oversee each project as it develops. On site colleagues have real time access to the system with the **Lucas App** via laptops, iPads and iPhones, giving them a complete picture of the project they are working on.

The Project Dashboard monitors and confirms that every critical stage of our work is complete. From the point at which clients' first place their orders, confirmation that all safety documentation has been issued, that operational and maintenance manuals have been provided, and that a site waste management plan is in place, through to procurement of supplies, completion of all work stages, project closure, final handover and client feedback.

During the project, the Lucas App allows project and site managers to remotely process operatives' timesheets on site, incorporate new operatives into our systems and vary supplies efficiently as and when they are needed.

The new **Lucas SmartSite App** is a simple systems interface that allows our operatives and contractors to photograph, document and follow-up reported incidents involving damage to work, clean-up notices or lack of protection on site and report them directly to our safety team at HQ. It improves site efficiency and makes us all safer.

Our operatives wear smart **WEP (workforce engagement programme) cards** incorporating QR codes. These show that they have completed Lucas's Safety as Standard initiative, and clients can use their smartphones instantly to check our operatives' qualification certificates and training records. This new system is efficient, paperless and transparent. A similar QR system on the back of the cards allows operatives to photograph and report near misses.

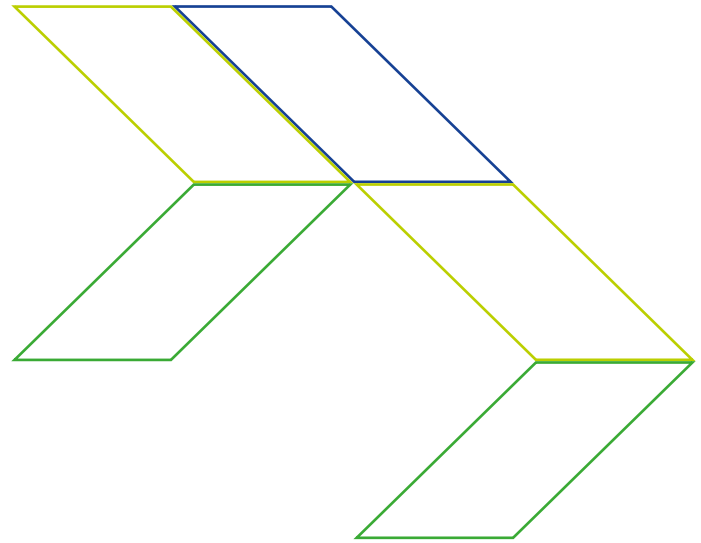
The latest app we are about to introduce is **ThoughtShare**. ThoughtShare quite simply can become a vault or repository of all those valuable ideas that might pop into your head about a project we're working on, but often at an inconvenient time of day when it is difficult to quiz a colleague about it.

In essence it is a collaborative tool. Through the app, particular users, both within Lucas or from outside partners, will be invited to collaborate on one or more of many projects covered by the app, and share ideas, photos or messages. It will become a convenient way of swapping knowledge but avoid bombarding colleagues with questions and ideas at the wrong time. It will also be incredibly useful if a project is mothballed for some time before we return to it. We'll have an easily accessible record of all our thoughts and ideas on the project.

These are just some of the ways mobile apps today can become extremely useful, bespoke tools for improving our working lives, keeping us safe, and making us more efficient.

# Lucas Breathe

A brilliant new protective treatment from Lucas that also cleans the air we breathe



---

**Lucas has developed a new protective treatment for natural stone, concrete and brick surfaces that also cleans the surrounding air.**

**It is called Lucas Breathe and it is a colourless, protective surface treatment containing miniscule (micronized) titanium dioxide particles. It protects the stone, concrete or brick surface but at the same time reacts with sunlight that activates a catalytic reaction with pollutants in the air. It turns them into harmless trace elements of water, carbon dioxide and nitrate salts which disperse naturally.**

Lucas Breathe has been developed over the last two and a half years in our laboratories. It is an invisible water-based treatment which forms a scaffold of surface treatment and penetrates deep into the substrate to remain active so long as light is present.

It dramatically reduces volatile organic compounds (VOCs) and nitrogen dioxide pollution (NO<sub>x</sub>) generated by heavy traffic and busy city-centre living, and resists the surface growth of mould. It helps kill airborne spores and allergens which cause asthma and breathing problems. The air cleansing action of the treatment is similar to the way plants and trees improve air quality.

Lucas Breathe can be applied to ground surfaces, facades, bridges and barriers and will neutralise harmful NO<sub>x</sub> gasses through the photocatalytic process. It will be particularly effective in areas where pedestrians pass through relatively confined spaces in the built-up environment.

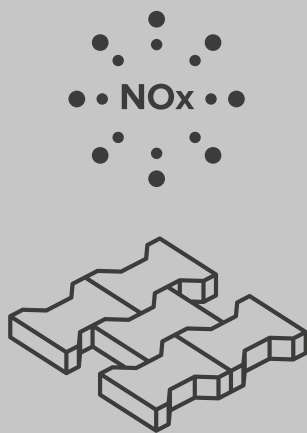
The use of Lucas Breathe will contribute considerably to buildings being able to achieve the WELL Building Standard, an internationally-recognised evidence-based system for measuring and monitoring the performance of building features that impact health and well-being.

The performance of Lucas Breathe has been underwritten after rigorous independent testing and analysis by Queen's University, Belfast. Our next step is to identify important sites in and around London and gain approval to apply Lucas Breathe under controlled conditions with NO<sub>x</sub> levels monitored before and after by scientists from King's College London who are working with the Greater London Authority on measures to improve air quality.

Lucas Breathe has been recognised by the British Lung Foundation as a valuable product that can help to reduce the growth of lung disease in the population. The BLF has made us a founding partner of the Living Well Alliance, an alliance that brings together companies who provide products, devices or treatments that support people to manage their lung conditions (see page 67).

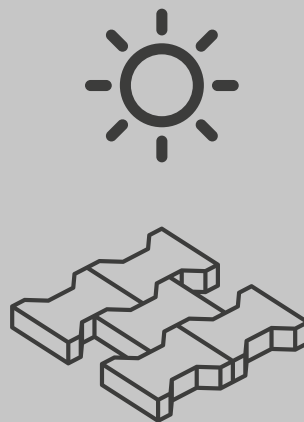


## The Process



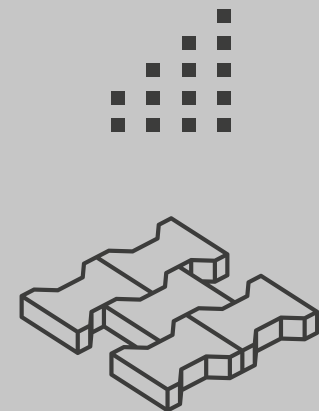
### Stage 1

- A single application of Lucas Breathe is applied to a porous substrate: Natural Stone, Concrete and Brick for example.
- A highly effective photocatalytic protection is provided for the effective life of the substrate.



### Stage 2

- When Light hits the treated surface it activates the catalyst (Nano grade TiO2).
- Harmful NOx gasses are instantly degraded by photocatalytic action into simple harmless substances, cleaning the air we breathe just as plants do.



### Stage 3

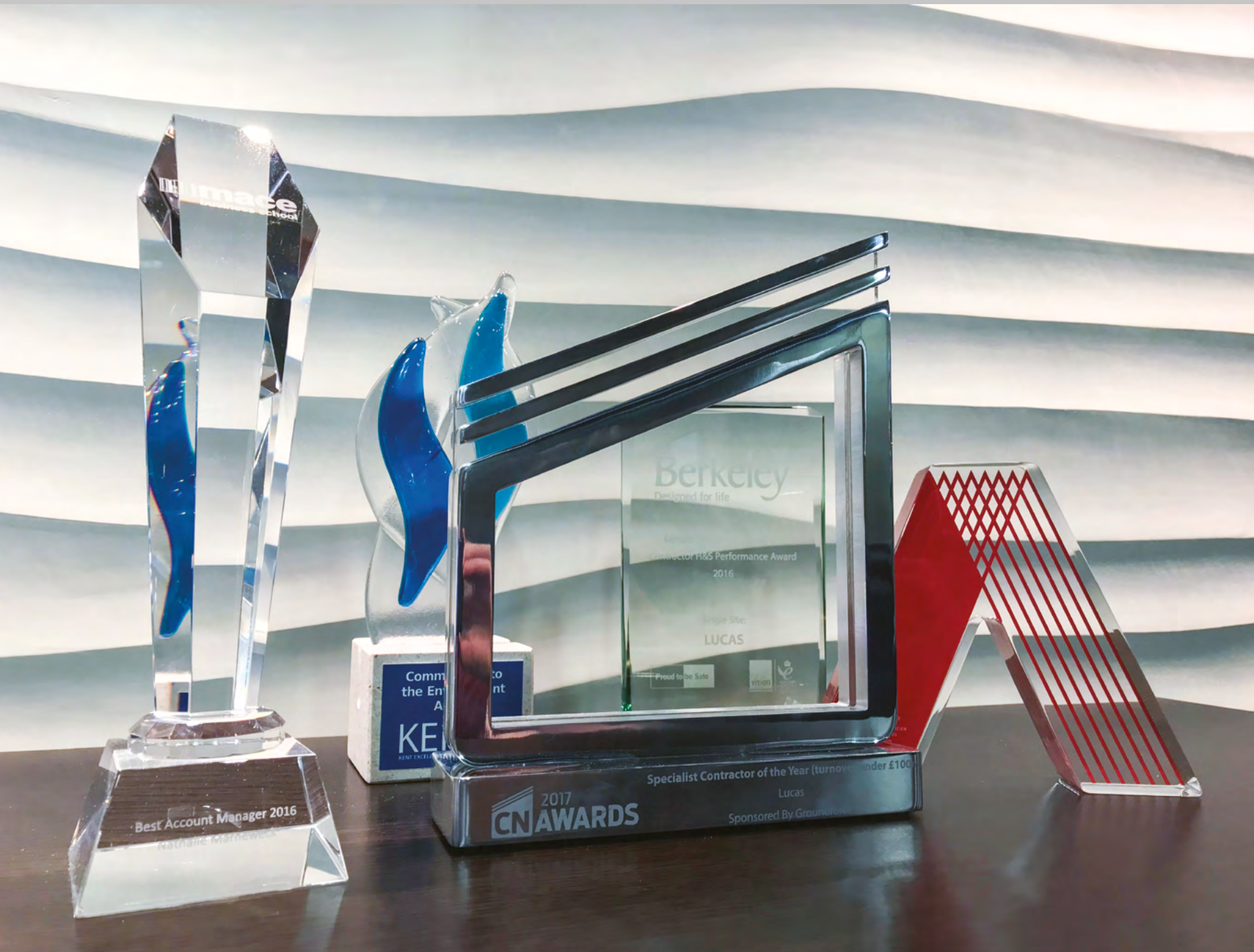
- Resulting by-products of the photocatalytic activity are naturally dispersed.
- These include trace elements of water, carbon dioxide and water soluble nitrate.



“Our aim is to continually **set new standards**. We recognise that there is a dire need to improve air quality especially in built up areas of our towns and cities. Lucas Breathe has been developed as a new protective surface treatment that cleans the surrounding air. With one in five people coping with respiratory problems, effective change for how we manage the air in our urban and busy traffic environments can make a **big impact on people’s lives.**”

# Awards

We always strive to carry out our projects and work to the best of our ability, so to be recognised as winners, and finalists in our field makes us very proud.





### Berkeley Group Apprentice Award

Lucas won the Berkeley Group Apprentice Award 2017 in the Best Subcontractor category. The awards recognise people and businesses that have gone the extra mile in demonstrating their commitment to apprenticeships.



### Construction News awards

Lucas has been crowned Specialist Contractor of the Year (turnover under £100 million) at the Construction News Awards 2017 held at the Grosvenor House Hotel in London. A panel of expert industry judges described our Executive Chairman and Managing Director, Danny Lucas, as “inspirational” and said Lucas “has taken an impressive approach to training and shows a progressive approach to business, not just within its specialist sector but across the industry as a whole.”



### KEiBA Commitment to the Environment

We won the Business Commitment to the Environment Award at the Kent Excellence in Business Awards. 50 finalists were confirmed for the awards ceremony and the Commitment to the Environment category attracted a wide range of applicants.



### Berkeley Best Performing Contractor

Lucas has been awarded a certificate and trophy by Berkeley Homes, as winners of the Best Performing Contractor, in terms of safety following on from the iconic One Tower Bridge project.



### Nathalie Marneweck crowned as best Account Manager for Mace Business School

Nathalie Marneweck, our Head of Project Support and Training, won the award for Best Account Manager at this year’s Mace Business School Awards. The Mace Business School is for all Mace’s Trade Contractors & Suppliers that are approved via their Supply Chain Management division. It is the first business school to focus solely on improving the performance of the construction businesses, through developing people and sharing knowledge and best practices.



### Construction Marketing awards

Lucas won the coveted Best Product Launch in the Construction Marketing Awards for the launch of Lucas ProTools and the first product in the range, the ProFinish paint brush with the assistance of Built For Marketing our marketing partner for Lucas ProTools. The awards showcase the construction industry’s creativity, innovation and effectiveness in marketing.



### Danny Lucas was a finalist for the Entrepreneur of the Year award.

50 finalists were announced after a record breaking number of entries for KEiBA 2017 and Danny was over the moon to make it on to the final lineup. The finalists were announced at the Kent Vision Live exhibition at the Kent Event Centre in Detling.



**J.R STONE LTD**

**BESPOKE DESIGN**  
*PLANNED WITH PRECISION*



**020 8848 1108**



**Unit 1 Alpha Estate  
Clayton Road  
UB3 1BB Hayes  
Middlesex**



**www.jrstone.co  
info@jrstone.co**



Winning the Specialist Contractor of the Year Award at Construction News Awards 2017



Receiving KEiBA Commitment to the Environment Award 2017



At Construction News Awards



Receiving the Berkeley Group Apprentice Award 2017



Construction News Specialist Awards 2017



Construction News Specialist Awards 2017



Attending a business Golf Day



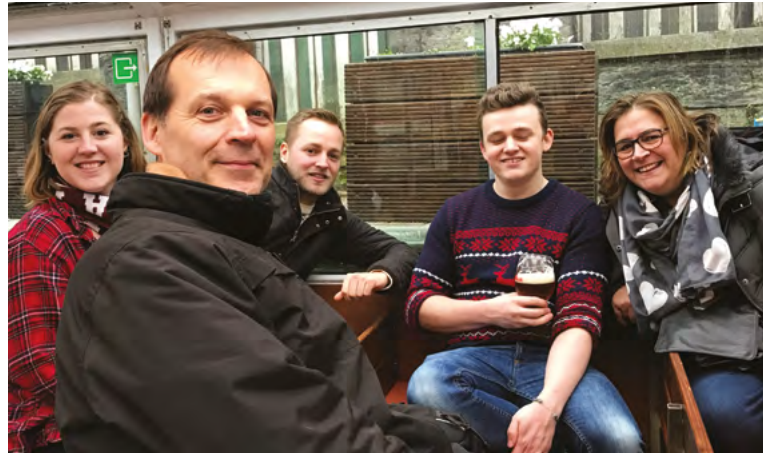
Lucas team gathering



Lucas get together



Lucas Christmas in Ghent, Belgium



Lucas Christmas in Ghent, Belgium



At Wimbledon



Lucas Christmas in Ghent, Belgium



Lucas Christmas in Ghent, Belgium



Trip to McLaren with the Chelsea Pensioners

• Commercial Vehicle Liveries • Branded Workwear & Safety Clothing

ARE YOU DRIVING NAKED?

A business with NO SIGN is a sign of NO BUSINESS

Vauxhall VIVARO CDTI

bsi ISO 9001 Quality Management

www.fxuk.net  
020 8313 1146

# RNB TOTAL

THE POWER BEHIND YOUR BUSINESS



“Lucas needed their very best supply chain partners on this project to absolutely guarantee 100% delivery on time and to very highest standards. In this regards there was only one choice for the electrical installation and this was RNB Total who are one of Lucas’s best performing subcontractors” DANNY LUCAS

RNB Total are the South East’s premier contractors in the provision and installation of commercial and bespoke electrical systems, industrial renewable energy developments, access control systems, information technology infrastructure and fire, health & safety electrical planning and delivery; we really are the power behind your business.

01843 855019  
WWW.RNBTOTAL.CO.UK

AkzoNobel

Dulux TRADE  
DIAMOND MATT  
DIAMOND EGGSHELL

PROTECTING YOUR WALLS & MAINTENANCE BUDGET

Specify Dulux Trade Diamond on your next project.  
To learn more visit [www.duluxtrade.co.uk/diamond](http://www.duluxtrade.co.uk/diamond)

Dulux TRADE

# Join our alliance to keep the nation's lungs healthy



This year we launched the Living Well Alliance, bringing together companies dedicated to improving the lives of people living with a lung condition. Each partner's generous donation helps us:

- Fund research to help find new ways to prevent, treat and cure lung disease
- Support people who struggle to breathe, helping them to take control of their lives
- Campaign to give people a voice and make the government act

If you would like to find out more about becoming a partner, please contact [sara.salehian@blf.org.uk](mailto:sara.salehian@blf.org.uk), or go to [blf.org.uk/lwa](http://blf.org.uk/lwa)



Living Well  
Alliance  
PROUD PARTNER



Registered charity in England and Wales (326730),  
Scotland (038415) and the Isle of Man (1177)

# Lucas and the British Lung Foundation



---

## Forming a Living Well Alliance

**Lucas with Lucas Breathe has become a founding partner of the Living Well Alliance, an initiative of the British Lung Foundation (BLF). The Living Well Alliance brings together companies who provide products, devices or treatments that support people to manage their lung conditions.**

Lucas has been developing Lucas Breathe for two and a half years. It is a new protective treatment for natural stone, concrete and brick surfaces that also cleans the surrounding air. The coating reacts to sunlight in much the same way that plants and trees do, helping to clean the air we breathe (see page 58).

As well as creating this exciting new product we want to promote awareness and new initiatives within construction to make a real difference to air quality in our built environment, for both construction workers and the people who use the buildings and infrastructure we create.

So we are working closely with the British Lung Foundation and its other partners including Festool which manufactures a range of electric sanding tools with built-in vacuuming features to minimise dust, to raise awareness of lung disease and how we can prevent it getting any worse.

All Living Well Alliance members have made a donation to the BLF, supporting the charity's work in looking after the nation's lungs, so that one day everyone can breathe clean air with healthy lungs. We want to help promote the BLF and what it stands for in the construction sector.

The BLF is a relatively small charity but punches above its weight. One of its big successes recently was to push for smoking in cars to be banned when someone under the age of 18 is also present in the car. The charity aims to double in size in the next five years.

Jason Cater, Director of Fundraising at the British Lung Foundation, said: "We are confident that our new Living Well Alliance partnership with Lucas will help bring positive changes in controlling air pollution in urban areas. We are extremely grateful for your support."

Danny Lucas said: "We recognise that there is a dire need to improve air quality. Lucas Breathe has been developed as a new protective surface treatment that cleans the surrounding air. With one in five people having to cope with respiratory problems, effective change for how we manage the air in our urban and busy traffic environments can make a big impact on people's lives".



1968

Lucas founded as a specialist spray & painting contractor whilst working for Taylor Woodrow.



1971

Spraying specialist Company firmly established as a spraying specialist.



1972

Company expands Proactive nature of company sees service expand at request of clients to include general painting and specialist finishes.



1974

Barbican Company completes Barbican, London.



1977

New service Introduces airless spraying.

Mural-plast®

1981

Acquisition Acquires Muralplast surface treatments.



1982

New to the team Danny Lucas joins aged 15.



1983

New offices Company relocates to London Docklands.



1994

Glaxo campus Completes Glaxo campus, Stevenage, Europe's largest construction site.



1994

www.lucasuk.com Company launches its website: www.lucasuk.com.



1995

Water-based paints Pioneers use of water-based paints



1996

Mace Completes first project for Mace



1997

New Frontiers Science Park Completes SKB New Frontiers Science Park, Harlow



1998

Brighton Station Completes major refurb to Brighton Station.



1998

Bluewater Completes Bluewater entirely using Muralplast surface treatments.



1999

Jubilee Line Completes Jubilee Line extension.



2011

McLaren Completes new McLaren Production Centre.



2011

McLaren Partner Appointed official McLaren Technology Partner.



2011

Technology Centre S Lucas Technology Centre opens.



2012

Award winner Wins major industry award for second time.



2012

Olympic park Completes all major venues at Olympic park



2012

The Shard Completes Shard.



2013

Industry awards Shortlisted for 2 industry awards (Construction News Specialists Awards and Construction News Awards).



2013

New brand New brand launched (Developed by Apple brand designer, Rob Janoff).



2014

McLaren Partnership McLaren and Lucas renew their contract partnership, following constant high quality fit out and decoration packages at the HQ in Woking.



2014

Bloomberg Place Lucas has secured a number of important packages at Walbrook Square - Bloomberg Place.



2014

Lucas ProFinish The designed and made in Britain Lucas ProFinish paintbrush set goes on sale and is sold out within 2 weeks.



2015

Grown In Britain Lucas proudly supports the "Grown In Britain" campaign which encourages the use of British grown timber.



2015

Safety As Standard As part of Lucas's Safety as Standard initiative, Lucas launch a Workforce Engagement Programme to enforce effective safety training.



2015

Lucas Off Site Lucas launches Lucas Off Site and delivers first Off Site bathroom pods for BBC Television Centre.



2015

Red Dot Awards The Lucas ProFinish paintbrush is awarded with an internationally acclaimed Red Dot for Product Design.



2015

BSkyB Carrying out decoration and fit out packages as part of the major expansion programme at BSkyB's Osterley campus



2016

1 million hours safe working Lucas have clocked up over one million hours of safe working without a reportable accident or incident.



2016

Industry awards Lucas shortlisted for two top awards in the 2016 Construction News Specialists Awards.



2016

Chelsea pensioners in the fast lane Lucas took a bunch of Chelsea Pensioners to visit McLaren Technology Centre.



2017

10 years of Lucas Fit Out Lucas is delighted to be celebrating the 10th anniversary of our Fit Out division this year.



2017

Breathe Launch Lucas has developed a new protective surface treatment for porous surfaces.



2017

Award Recognition Lucas shortlisted as a finalist in the Specialist Contractor category.



2017

Lucas awarded by Berkeley Homes Lucas awarded a certificate and trophy by Berkeley Homes, as winners of the Best Performing Contractor.



2017

Lucas supports Breathe Freely campaign Lucas is proud to be supporting the Breathe Freely campaign by BOHS; The Chartered Society for Worker Health Protection.



1985

**Heathrow**  
Completes T2, Heathrow using Muralplast.



1986

**Midland Bank**  
Completes major data centre for Midland Bank.



1988

**London City Airport**  
Completes the new London City Airport.



1989

**Canary Wharf**  
Completes phase one of Canary Wharf.



1991

**Danny Lucas**  
Danny Lucas becomes a director.



1992

**MI5**  
Completes MI5 HQ, Millbank.



1993

**Warner Bros**  
Completes UK's first Warner Bros cinema in Leicester Square.



1994

**ISO 9001**  
Achieves ISO 9001 accreditation.



1994 (2004)

**Millennium Dome**  
Completes Millennium Dome (and O2 Arena).



2006

**T5**  
Completes T5, Heathrow.



2007

**Logistics**  
Opens new logistics centre.



2007

**Launch**  
Lucas Fit Out launched.



2010

**Office move**  
Relocates to new group HQ in Kent.



2010

**Chairman**  
Danny Lucas becomes Chairman and Managing Director.



2010

**Award**  
Wins major industry award.



2010

**ISO 14001**  
Achieves ISO 14001 accreditation.



2013

**One Tower Bridge**  
Lucas scoops London's most luxurious residential project at One Tower Bridge.



2013

**FORS Bronze**  
Lucas achieves Bronze FORS (Fleet Operator Recognition Scheme) accreditation.



2013

**FINISH**  
Lucas launches its inaugural Yearbook called FINISH which includes key information on Lucas including staff profiles, projects and supplier profile.



2014

**FORS Silver**  
Following the Bronze accreditation, Lucas have now achieved a FORS Silver accreditation.



2014

**Lucas Wins**  
Lucas wins 2014 Construction News Specialists Awards – Finishing & Fit Out Specialist of the Year.



2014

**Specialist Contractor of the year**  
Lucas is announced as Specialist Contractor of the year at the 2014 Building Awards hosted by actor and comedian James Corden.



2014

**Lucas ProTools launch**  
Lucas launches Lucas ProTools on 27th November at the McLaren Technology Centre with designer Wayne Hemmingway.



2014

**Nova Residential**  
Appointed to carry out fit out & decorations to the penthouses for the prestigious Nova Residential block within the redevelopment of the Victoria area of London.



2015

**South Bank Tower**  
Performing multiple fit out & finishing packages on Kings Reach Tower now renamed South Bank Tower, a very high end residential development.



2015

**McLaren Thought Leadership Centre**  
Lucas completes work on McLaren's Thought Leadership Centre.



2015

**Tate Modern**  
Lucas is appointed to carry out the complete decoration package for the Tate Modern extension where Muralplast MSP will be applied.



2016

**Making the finest impression at Tate Modern**  
Lucas painting teams are once again deployed at Tate Modern.



2016

**New film spotlights Lucas's commitment to innovation**  
A new film demonstrating Lucas's commitment to innovation.



2016

**The Lucas College Programme**  
Lucas launches their College Programme.



2016

**Television Centre**  
Lucas deploys innovative airless spray plastering technique at the former BBC Television Centre.



2016

**Major fit out for signature City office development**  
Lucas is working on a major fit out at 1 Angel Court.



2017

**Milestone of 1.5million hours of safe working**  
Lucas have done it again by reaching over 1.5million hours of safe work!



2017

**KEIBA Awards**  
Delighted to have won the KEIBA Commitment to the Environment Award.



2017

**Construction News Awards winner**  
So proud to have been crowned Specialist Contractor of the Year.



2017

**The British Lung Foundation**  
Lucas, with Lucas Breathe is thrilled to announce that they are now a Living Well Alliance partner with the British Lung Foundation.



2017

**Lucas reaches completion of all MBO financial commitments**  
Lucas has completed all its financial commitments in connection with the 2010 management buyout.



2017

**Lucas shortlisted for Berkeley Group Apprentice Awards**  
Lucas is delighted to have been shortlisted for the Berkeley Group Apprentice Awards 2017.



2017

**College partnership**  
Lucas has appointed its first fully qualified training and apprenticeships manager and is partnering with London South East Colleges.



2017

**Lucas wins Berkeley Group Apprentice Award**  
Lucas won the Berkeley Group Apprentice Award 2017 in the Best Subcontractor category.



# Changing Perspectives



---

## Giving something back to the community

**At Lucas we have recently made a concerted effort to find new and lasting ways to give something back to our community.**

In the past, sudden opportunities have arisen where we have been able to offer some help. Earlier this year for example, following the terrible terrorist attack at London Bridge and nearby Borough Market, we joined efforts to help the market traders get back on their feet quickly by carrying our restorative decorations for them. At other times we've helped individual, disadvantaged residents living at or near our projects by donating materials and providing some practical assistance.

But we also recognise there are other ways to give something back that require us to invest more of our time and creative thinking, to bring about lasting beneficial change in our community.

The development of Lucas Breathe for example made us much more aware of the serious and growing problems caused by the polluted air that we breathe, particularly in built-up areas. It was only natural, therefore, that we should want to do all we can to help campaigners in this field.

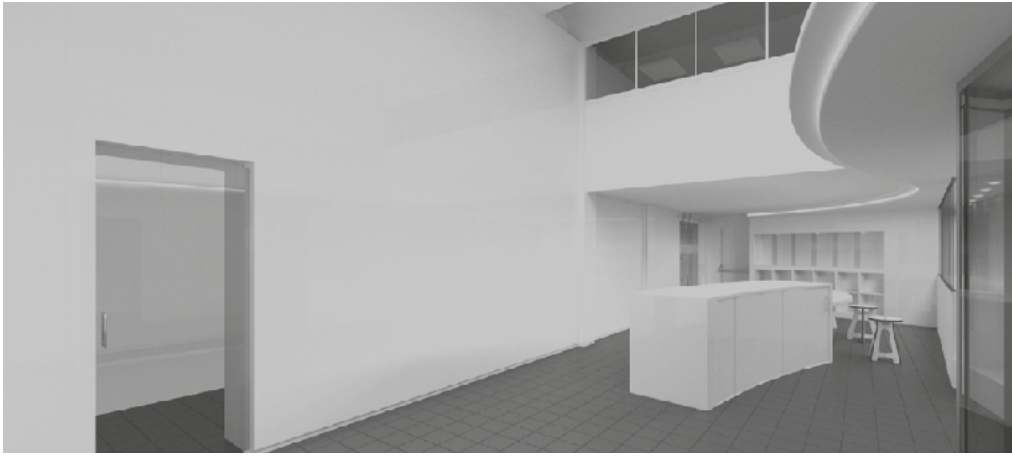
The British Lung Foundation, although a relatively small charity, is playing a major role in campaigning for better air quality and to help sufferers with lung problems. Lucas welcomed the chance to make a donation to the charity and become a member of the Living Well Alliance where we now strive with like-minded companies to develop products and processes that will help to reverse the fall in air quality for the longer term.

We have also made a huge effort to find a way to help solve the skills shortage in our industry, and set about establishing our own officially-recognised training programmes for apprentices. We've appointed an experienced apprenticeships manager, forged a comprehensive partnership with London South East Colleges, and after considerable effort, we have secured accreditation from the City & Guilds to be able to assess candidates for their NVQ Level 2 qualifications.

This paves the way for us to set up practical courses with the college and enthuse the next generation of painters, decorators and fit out operatives for the future.

We are also going a step further by working closely with the charity Bounce Back that works with ex-offenders. This way, not just school leavers but others in our society can benefit from our training and our educational videos, and will realise the opportunities open to them in our industry.





---

## New visitor centre completes the Lucas tour

**Lucas plans to open its own Visitor Centre in the New Year which will complete the facilities here at HQ for a complete tour around the company.**

Sparked by the work we are starting to do with apprentices and the training courses we plan to provide in partnership with London South East Colleges, we decided we would like to extend facilities here and reach out to an even younger audience of school children. We aim to enthuse them, and also other guests from architects and specifiers, about what is happening in construction today and how things have changed over the years.

We plan a small museum that will look back at tools and techniques used in the past and show by contrast the way we organise ourselves for working on a modern construction site today. We'll look at the new Lucas ProTools range and new technologies we exploit for a safer and more efficient way of working.

Our own “**Professor**” David Greenslade, **Lucas’s in-house paint chemist**, will give talks and classes to both children and our own operatives about paint science and the revolutionary surface treatments we develop. We will also invite guest speakers from companies such as Dulux.

We’d like to film some of the sessions and put the films up on our own You Tube channel for a wider audience.

We will also have a small retail space to complement our online Lucas Team Store where visitors may buy our branded clothing or new tools.



“I believe we can make this an **interesting learning space** for younger children and also for fellow professionals and colleagues. It is a natural addition to our existing presentation suite, the **Lucas Innovation Centre**, our laboratories and our new “Brush up with Barry” studio. It completes the Lucas tour.”

AkzoNobel

TRANSFORM A SPACE  
WITH DULUX TRADE.  
AND TRANSFORM THE  
WAY THEY WORK.

FOR YOUR NEXT PROJECT, GET THE LATEST  
PAINT SPECIFICATION TOOLS FROM DULUX TRADE  
[duluxtrade.co.uk/specifycolour](http://duluxtrade.co.uk/specifycolour)





HEAD OFFICE  
+44 (0)1732 884 022

11 INVICTA BUSINESS PARK  
LONDON ROAD  
WROTHAM  
KENT  
TN15 7RJ  
UNITED KINGDOM

LUCAS@LUCASUK.COM

FOLLOW US ON

